

Flute

NATURAL MINOR SCALES

C Natural Minor Scale

Musical notation for the C Natural Minor Scale in 2/4 time. The scale is written on a single staff in treble clef with a key signature of three flats (Bb, Eb, Ab). The notes are C4, D4, Eb4, E4, F4, G4, Ab4, A4, Bb4, B4, C5. The first octave is played ascending and descending, followed by a second octave ascending and descending. Green accidentals (flats) are placed above the notes Eb, Ab, and Bb.

F Natural Minor Scale

Musical notation for the F Natural Minor Scale in 2/4 time. The scale is written on a single staff in treble clef with a key signature of two flats (Bb, Eb). The notes are F4, G4, Ab4, A4, Bb4, C5, D5, Eb5, E5, F6. The first octave is played ascending and descending, followed by a second octave ascending and descending. Green accidentals (flats) are placed above the notes Ab, Bb, and Eb.

Bb Natural Minor Scale

Musical notation for the Bb Natural Minor Scale in 2/4 time. The scale is written on a single staff in treble clef with a key signature of three flats (Bb, Eb, Ab). The notes are Bb4, C5, D5, Eb5, E5, F6, G6, Ab6, A6, Bb7. The first octave is played ascending and descending, followed by a second octave ascending and descending. Green accidentals (flats) are placed above the notes Eb, Ab, and Bb.

Eb Natural Minor Scale

Musical notation for the Eb Natural Minor Scale in 2/4 time. The scale is written on a single staff in treble clef with a key signature of four flats (Bb, Eb, Ab, Db). The notes are Eb4, F4, G4, Ab4, A4, Bb4, C5, D5, Eb5, E5, F6. The first octave is played ascending and descending, followed by a second octave ascending and descending. Green accidentals (flats) are placed above the notes Ab, Bb, and Eb.

Ab Natural Minor Scale

Musical notation for the Ab Natural Minor Scale in 2/4 time. The scale is written on a single staff in treble clef with a key signature of four flats (Bb, Eb, Ab, Db). The notes are Ab4, Bb4, C5, D5, Eb5, E5, F6, G6, Ab6, A6, Bb7. The first octave is played ascending and descending, followed by a second octave ascending and descending. Green accidentals (flats) are placed above the notes Bb, Eb, and Ab.

C#/Db Natural Minor Scale

Musical notation for the C#/Db Natural Minor Scale in 2/4 time. The scale is written on a single staff in treble clef with a key signature of one sharp (F#). The notes are C#4, D4, E4, F#4, G4, A4, B4, C#5, D5, E5, F#6. The first octave is played ascending and descending, followed by a second octave ascending and descending. Green accidentals (sharps) are placed above the notes F# and C#.

F# Natural Minor Scale

Musical notation for the F# Natural Minor Scale in 2/4 time. The scale is written on a single staff in treble clef with a key signature of two sharps (F#, C#). The notes are F#4, G4, A4, B4, C#5, D5, E5, F#6, G6, A6, B6. The first octave is played ascending and descending, followed by a second octave ascending and descending. Green accidentals (sharps) are placed above the notes B and C#.

B Natural Minor Scale

Musical notation for the B Natural Minor Scale in 2/4 time. The scale is written on a single staff in treble clef with a key signature of two sharps (F#, C#). The notes are B4, C#5, D5, E5, F#6, G6, A6, B6, C#7, D7, E7. The first octave is played ascending and descending, followed by a second octave ascending and descending. Green accidentals (sharps) are placed above the notes C# and F#.

E Natural Minor Scale

Musical notation for the E Natural Minor Scale in 2/4 time. The scale is written on a single staff in treble clef with a key signature of one sharp (F#). The notes are E4, F#4, G4, A4, B4, C#5, D5, E5, F#6, G6, A6, B6. The first octave is played ascending and descending, followed by a second octave ascending and descending. Green accidentals (sharps) are placed above the notes F# and C#.

A Natural Minor Scale

Musical notation for the A Natural Minor Scale in 2/4 time. The scale is written on a single staff in treble clef with a key signature of no sharps or flats. The notes are A4, B4, C5, D5, E5, F#6, G6, A6, B6, C#7, D7, E7. The first octave is played ascending and descending, followed by a second octave ascending and descending. Green accidentals (sharps) are placed above the notes C# and F#.

D Natural Minor Scale

Musical notation for the D Natural Minor Scale in 2/4 time. The scale is written on a single staff in treble clef with a key signature of two flats (Bb, Eb). The notes are D4, E4, F4, G4, Ab4, A4, Bb4, C5, D5, Eb5, E5, F6. The first octave is played ascending and descending, followed by a second octave ascending and descending. Green accidentals (flats) are placed above the notes Ab and Bb.

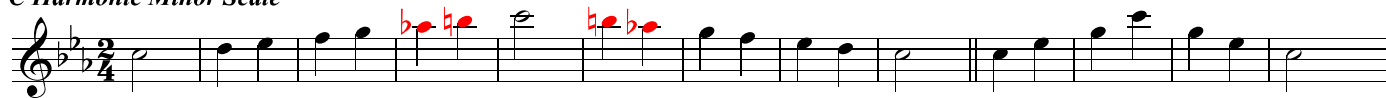
G Natural Minor Scale

Musical notation for the G Natural Minor Scale in 2/4 time. The scale is written on a single staff in treble clef with a key signature of one flat (Bb). The notes are G4, A4, Bb4, B4, C5, D5, Eb5, E5, F6, G6, Ab6, A6, Bb7. The first octave is played ascending and descending, followed by a second octave ascending and descending. Green accidentals (flats) are placed above the notes Bb and Ab.

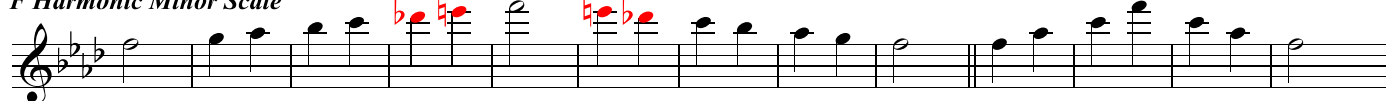
Flute

HARMONIC MINOR SCALES

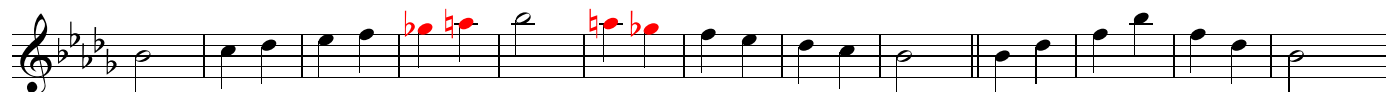
C Harmonic Minor Scale



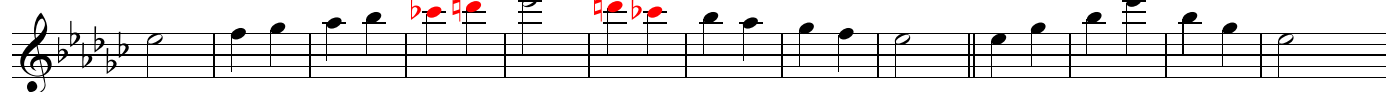
F Harmonic Minor Scale



Bb Harmonic Minor Scale



Eb Harmonic Minor Scale



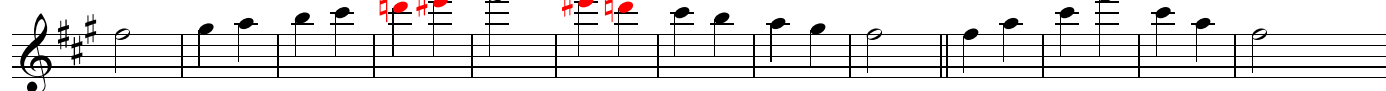
Ab Harmonic Minor Scale



C#/Db Harmonic Minor Scale



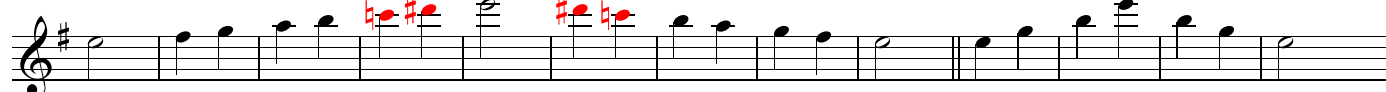
F# Harmonic Minor Scale



B Harmonic Minor Scale



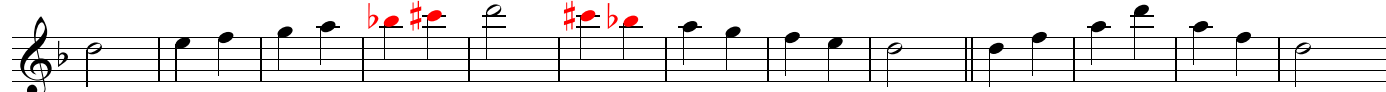
E Harmonic Minor Scale



A Harmonic Minor Scale



D Harmonic Minor Scale



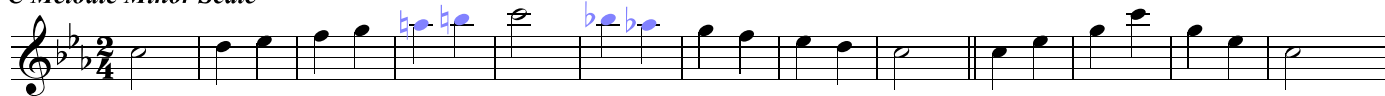
G Harmonic Minor Scale



Flute

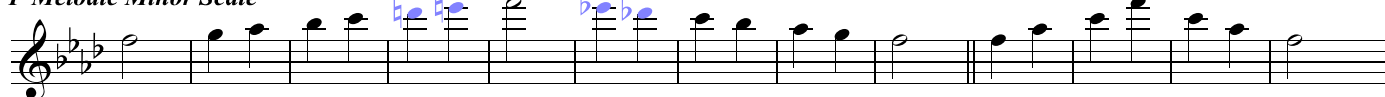
MELODIC MINOR SCALES

C Melodic Minor Scale



Musical notation for the C Melodic Minor Scale in 2/4 time. The scale is written on a single staff in treble clef with a key signature of two flats (Bb, Eb). The notes are C, D, Eb, E, F, G, A, Bb. The ascending scale is shown with blue accidentals (flats) on Eb and Bb. The descending scale is shown with blue accidentals (flats) on Bb and Eb. The piece concludes with a double bar line.

F Melodic Minor Scale



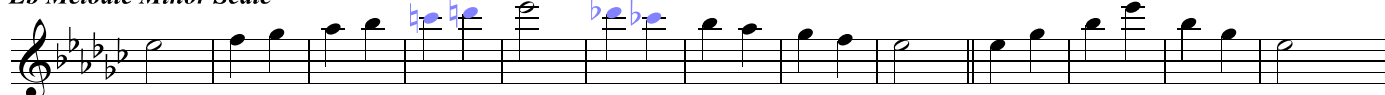
Musical notation for the F Melodic Minor Scale in 2/4 time. The scale is written on a single staff in treble clef with a key signature of three flats (Bb, Eb, Ab). The notes are F, G, Ab, A, Bb, C, D, Eb. The ascending scale is shown with blue accidentals (flats) on Ab and Eb. The descending scale is shown with blue accidentals (flats) on Eb and Ab. The piece concludes with a double bar line.

Bb Melodic Minor Scale



Musical notation for the Bb Melodic Minor Scale in 2/4 time. The scale is written on a single staff in treble clef with a key signature of three flats (Bb, Eb, Ab). The notes are Bb, C, D, Eb, F, G, A, Bb. The ascending scale is shown with blue accidentals (flats) on Eb and Bb. The descending scale is shown with blue accidentals (flats) on Bb and Eb. The piece concludes with a double bar line.

Eb Melodic Minor Scale



Musical notation for the Eb Melodic Minor Scale in 2/4 time. The scale is written on a single staff in treble clef with a key signature of three flats (Bb, Eb, Ab). The notes are Eb, F, G, Ab, Bb, C, D, Eb. The ascending scale is shown with blue accidentals (flats) on Ab and Bb. The descending scale is shown with blue accidentals (flats) on Bb and Ab. The piece concludes with a double bar line.

Ab Melodic Minor Scale



Musical notation for the Ab Melodic Minor Scale in 2/4 time. The scale is written on a single staff in treble clef with a key signature of four flats (Bb, Eb, Ab, Db). The notes are Ab, Bb, C, D, Eb, F, G, Ab. The ascending scale is shown with blue accidentals (flats) on Eb and Ab. The descending scale is shown with blue accidentals (flats) on Ab and Eb. The piece concludes with a double bar line.

C#/Db Melodic Minor Scale



Musical notation for the C#/Db Melodic Minor Scale in 2/4 time. The scale is written on a single staff in treble clef with a key signature of one sharp (F#) and one flat (Bb). The notes are C#, D, Eb, E, F, G, A, Bb. The ascending scale is shown with blue accidentals (sharps) on D and E, and a flat on Bb. The descending scale is shown with blue accidentals (flats) on Bb and Eb. The piece concludes with a double bar line.

F# Melodic Minor Scale



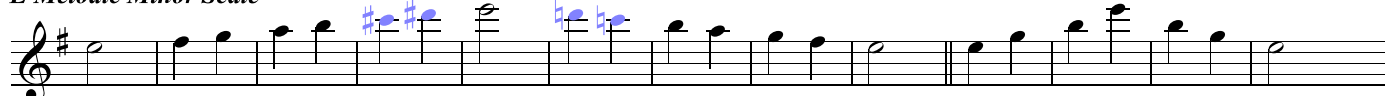
Musical notation for the F# Melodic Minor Scale in 2/4 time. The scale is written on a single staff in treble clef with a key signature of two sharps (F#, C#). The notes are F#, G, A, B, C, D, E, F#. The ascending scale is shown with blue accidentals (sharps) on A and B. The descending scale is shown with blue accidentals (flats) on B and A. The piece concludes with a double bar line.

B Melodic Minor Scale



Musical notation for the B Melodic Minor Scale in 2/4 time. The scale is written on a single staff in treble clef with a key signature of two sharps (F#, C#). The notes are B, C, D, E, F, G, A, B. The ascending scale is shown with blue accidentals (sharps) on D and E. The descending scale is shown with blue accidentals (flats) on F and E. The piece concludes with a double bar line.

E Melodic Minor Scale



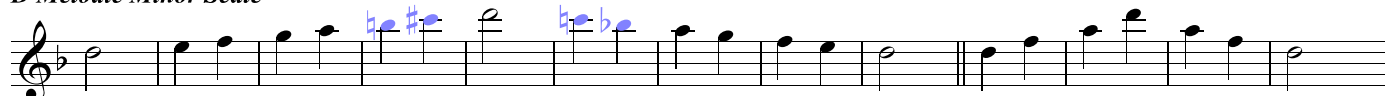
Musical notation for the E Melodic Minor Scale in 2/4 time. The scale is written on a single staff in treble clef with a key signature of one sharp (F#). The notes are E, F, G, A, B, C, D, E. The ascending scale is shown with blue accidentals (sharps) on A and B. The descending scale is shown with blue accidentals (flats) on C and B. The piece concludes with a double bar line.

A Melodic Minor Scale



Musical notation for the A Melodic Minor Scale in 2/4 time. The scale is written on a single staff in treble clef with a key signature of no sharps or flats. The notes are A, B, C, D, E, F, G, A. The ascending scale is shown with blue accidentals (sharps) on C and D. The descending scale is shown with blue accidentals (flats) on F and E. The piece concludes with a double bar line.

D Melodic Minor Scale



Musical notation for the D Melodic Minor Scale in 2/4 time. The scale is written on a single staff in treble clef with a key signature of two sharps (F#, C#). The notes are D, E, F, G, A, B, C, D. The ascending scale is shown with blue accidentals (sharps) on F and G. The descending scale is shown with blue accidentals (flats) on C and B. The piece concludes with a double bar line.

G Melodic Minor Scale



Musical notation for the G Melodic Minor Scale in 2/4 time. The scale is written on a single staff in treble clef with a key signature of one sharp (F#). The notes are G, A, B, C, D, E, F, G. The ascending scale is shown with blue accidentals (sharps) on A and B. The descending scale is shown with blue accidentals (flats) on C and B. The piece concludes with a double bar line.